



museo  
galileo

+

Istituto  
e Museo  
di Storia  
della Scienza

didactics 2011/12



Museo Galileo has expanded the didactic activities offered for the 2011-12 scholastic year. In addition to last year's successful program the Museum has enriched this year's program with new promotions, visits and workshops whose contents offer groups a way to deepen their knowledge in an entertaining way while learning about the most important aspects of the museum's permanent collection and scientific, historical themes.

### **New! INTERACTIVE ROOMS**

By the end of 2011 Museo Galileo plans to expand its exhibition space to include several, new interactive rooms on the museum's ground floor. Visitors will be able to independently interact with the innovative exhibits which will demonstrate the function of some of the instruments found in the historic collections.

### **OPENING HOURS**

9:30 am - 6:00 pm every day (including Saturdays and Sundays)

except Tuesdays 9:30 am - 1:00 pm

### **INFORMATION AND RESERVATIONS**

Monday - Friday 9:00 am - 5:00 pm

Tel +39 055 234 3723 Fax +39 055 2478350



# INFO

## DIDACTIC ACTIVITIES

Reservations are required for all scholastic and group visits of 15 persons or more. There is no booking fee and the reservation is considered valid only after receiving a confirmation. Please note that groups greater than 30 people will be divided into two or more distinct groups.

A total of two educators per group enter for free.

### **Simple Group Entrance (without a museum educator)**

Costs: Group discount for students 15 years old and under is € 4,00 each, € 5,00 each for those 16 and older\*.

### **Guided Visits with Museum Educator**

These visits are offered to groups with a minimum of 15 and a maximum of 30 persons.

Duration: 90 minutes

Costs: Groups of students 15 years old and under is € 6,00 each, € 7,00 each for those 16 and older\*.

### **Educational Workshops**

These visits are offered to groups with a minimum of 15 and a maximum of 30 persons.

Duration: 90 minutes including a brief explanation of the rooms pertaining to the topic.

Costs: Groups of students 15 years old and under is € 6,00 each, € 7,00 each for those 16 and older\*.

\*Please note that the museum's fees are expected to change after the opening of the new interactive rooms.

## **Experiential Visit**

The museum's mother-tongue English guide will take the group through the museum's permanent collections of the Medici and Lorraine families. In addition, the guide will demonstrate a few model replicas which are designed to stimulate the students' interest in science. See the last page for special offer.

**Mondays, Wednesdays, Thursdays:**

**9.30 am, 11.30 am, 1.00 pm**

**Fridays: 9.30 am, 11.30 am, 2.00 pm, 4.00pm**

**Tuesdays and Saturdays: 9.30 am and 11.30 am**

**Recommend for all levels and types of schools.**



## ***The Life and Works of Galileo*** **- Theme Visit**

A museum educator will accompany the group through the museum's first floor. This visit will concentrate on Galileo's personal and academic life as well as his scientific research, inventions and writings. The educator will discuss how Galileo made his important discoveries and then how the Medici family created the Accademia del Cimento to keep his memory alive by continuing experimental research in astronomy and thermometry.

**Mondays, Wednesdays, Thursdays:**

**9.30 am, 11.30 am, 1.00 pm**

**Fridays: 9.30 am, 11.30 am, 2.00 pm, 4.00pm**

**Tuesdays and Saturdays: 9.30 am and 11.30 am**

**Recommended for all levels and  
types of school groups.**



## ***Museo Galileo's Restoration Workshop - Theme Visit***

This interesting itinerary focuses on the analysis of specific materials like metals, glass and wood types used to create many of the museum's scientific instruments. Part of the visit takes place directly in the museum's restoration workshop where expert artisans demonstrate and explain how to work the various types of materials and which ones are best suited for creating the beautiful instrumentation displayed through out the museum.

**Mondays, Wednesdays, Thursdays:**  
**9.30 am, 11.30 am, 1.00 pm**

**Fridays: 9.30 am, 11.30 am, 2.00 pm, 4.00pm**

**Tuesdays and Saturdays: 9.30 am and 11.30 am**

**Recommended for high school and university students interested in engineering, art restoration and museum management.**



## **New! Medicine in Florence - Theme Visit**

Visit the museum through the eyes of the history of medicine from that of the Greeks up to the 18th Century Florence which gave rise to a new department at the medical school to teach obstetrics and gynecology utilizing anatomical models. The visit will also highlight the development of the thermometer, microscope and pharmacy. A special visit to Museo Galileo's illustrious library will conclude the tour where rare, life-size 18th century anatomical plates will be revealed.

**Mondays, Wednesdays, Thursdays:**

**9.30 am, 11.30 am, 1.00 pm**

**Fridays: 9.30 am, 11.30 am, 2.00 pm**

**Tuesdays and Saturdays: 9.30 am and 11.30 am**

**Recommend for those 16 and older that are interested in anatomical and medical sciences.**



## **WORKSHOP - *Galileo and Mechanical Physics***

The museum educator, dressed up as Galileo, will show the importance of the experiments of this great scientist performed by using the inclined plane and pendulum. The activity is designed to increase the students' understanding of Galileo's works and how they fundamentally relate to the evolution of modern physics with regards to falling bodies and the laws of motion.

**Tuesdays: 9.30 am and 11.30 am**

**Wednesdays and Thursdays:  
9.30 am, 11.30 am and 2.30 pm**

**Recommended for middle and high school students.**



## **WORKSHOP - *Galileo's Observations from the Naked Eye to the Telescope***

This workshop begins with the mythological stories tied to the planets and their names. It then proceeds by explaining and demonstrating how to use the nocturnal instrument to tell time.

The visit then focuses on Galileo and his telescope's characteristics and functional abilities. It concludes by discussing the significance of his astronomical discoveries by comparing Galileo's drawings and sketches made during his data collection and research with modern photographs.

**Fridays: 9.30 am, 11.30 am, 2.30 pm**

**Recommended for all levels and types of scholastic groups.**

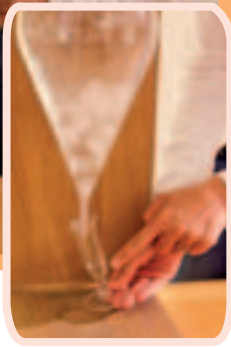


## **WORKSHOP *Galileo's Legacy: Scientific Methodology***

This workshop takes the students through an in-depth discussion of the main experiments performed by the Galilean research group, Accademia del Cimento, between 1657-67. During this activity the students can watch re-enactments of fun experiments in the fields of meteorology, pneumatics, and astronomy using replicas of some of the museum's beautifully instrumentation.

**Thursdays: 9.30 am and 11.30 am**

**Recommended for high school and university levels that desire to learn more about the scientific methods for basic research and the development of both valid and reliable instruments.**



**New!** **WORKSHOP - *The Spectacle of Science: The Beginnings of Electrostatics***

This workshop is set up to recreate the fascinating journey of the initial discoveries and work with electrostatic electricity. The students will learn about the phenomenon tied to the field of electrostatics by watching various demonstrations like how to create static electricity by rubbing materials or through induction, the attraction and repulsion characteristics of electrical charges, the accumulation of electrical charge and the difference between conductive and insulating materials.

**Wednesdays: 9.30 am and 11.30 am**

**Recommended for all levels and types of school groups.**



## **WORKSHOP - *Leonardo, Art and Science***

Leonardo considered drawing to be the “queen” of science. The study of light, perspective and other artistic techniques and practices are presented by using the sketches and drawings made by Leonardo da Vinci in his own artistic/scientific studies. The main objective of the workshop is to explain (using simple, yet entertaining demonstrations) the relationships between artistic representation, visual perception, and perspective methods.

**Mondays, Tuesdays and Fridays: 9:30 am, 11:30 am**

**Recommended for high school and university levels, especially art and physics students.**



# SPECIAL PROMOTIONS

## **Special Offer for Scholastic Groups**

By booking an Experiential Visit in English from November 2011 through January 2012 the school pays only the group entrance fee (the didactic fee of € 2,00 per person is waived).

## **Science in Play**

This on-line game made for scholastic groups and individual players was created in collaboration with Portale Ragazzi. It is possible to play the game in either English or Italian. The scholastic groups that complete the game and then come to visit Museo Galileo as a class will receive a class prize.

The website address for the game is:

[www.portaleragazzi.it/giocogalileo](http://www.portaleragazzi.it/giocogalileo)

## **Virtual Visit and Multi-language Mini-guides**

[www.museogalileo.it](http://www.museogalileo.it)

By going to the museum's official website you have the possibility to do a virtual tour of the museum's two main floors as well as download and print out a room-by-room mini-guide in various languages which have been made available in PDF format. The website also has dozens of animations which show how many of the instruments function.

## **Taking ATAF to Museo Galileo Prolongs the Validity of your Ticket!**

Visitors who use Florence's public transportation system (ATAF) to arrive at the museum can have the ticket's validity time extended an additional 4 hours. This service is free of charge when you present your validated bus ticket at the museum's ticket office.

**Museo Galileo can also be found on Facebook**





Informational text label on the pedestal.





## **Museo Galileo**

Piazza dei Giudici 1 – 50122 Firenze

tel. +39 055 265311 – fax +39 055 2653130

[www.museogalileo.it](http://www.museogalileo.it)

## **Information and Reservations**

**Tel +39 055 234 3723 fax +39 055 247 8350**

**Monday – Friday 9:00 am – 5:00 pm**

**[groups@museogalileo.it](mailto:groups@museogalileo.it)**

